



INSTRUMENTS

Gas Detection for Life !

PORTABLE MULTI GAS MONITOR

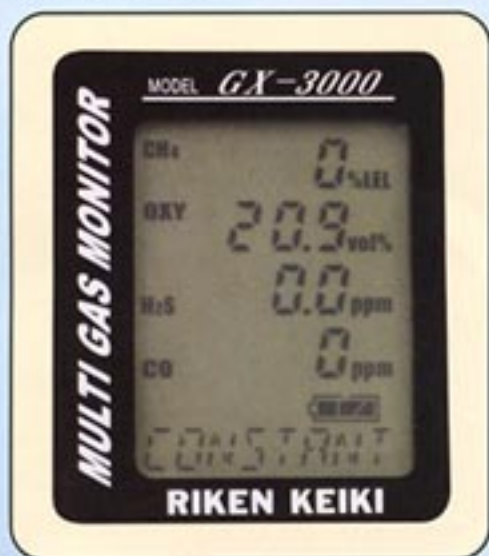
*Five functions
in one unit*

- Combustibles
- Oxygen
- Hydrogen Sulfide
- Carbon Monoxide
- Temperature

Model GX-3000

Intrinsically safe/Flame proof design
Class Exiad II BT3

**High mobility !
No installation work !**



< Display >

Features

- Monitors 4 gases & Temp.
- Intrinsically safe/Flame proof design
- Drip proof design
- Long monitoring time (Approx. 12 hours)
- 360° visual and audible alarm
- Rechargeable battery
- Datalogging (Max 180 days)



< Actual size >



05QR 007

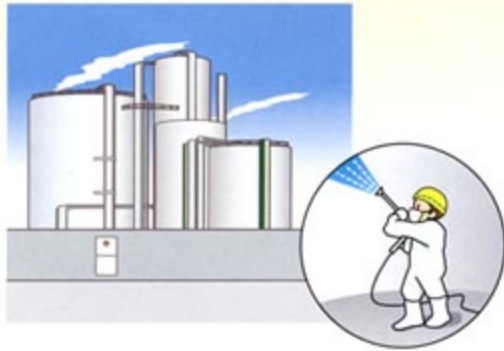


97ER 005



RIKEN KEIKI

Petrochemical



- Facility maintenance
- Tank cleaning

Underground



- Oxygen deficiency
- Public utility tunnel

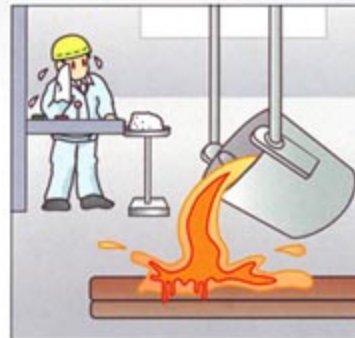
Gas monitoring and safety control for field work!

Shipbuilding



- Tank entry and cleaning
- Painting

Iron Steel



- Around boilers
- Facility maintenance

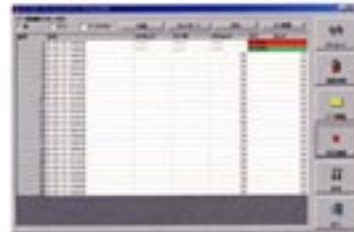
- * Five functions in one unit
(Type A : O₂ / HC or CH₄ / H₂S / CO / Temp.)
- * No installation work
- * 360° visual and audible alarm

Beep! Beep!

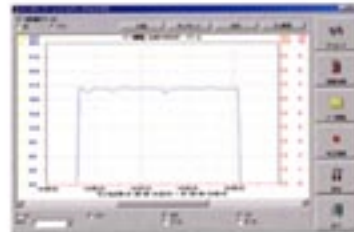


Datalogging (Optional)

Direct IR communication from GX-3000 to PC !



- ☆ **Data summary**
- Copy to spreadsheet
 - Easy data management
 - Max 180 days of datalogging



- ☆ **Trend graph**
- Gas concentration follow-up
 - 15 minutes trend graph after gas alarm



[Ordering information]

Type A	4 gas, O ₂ / HC (or CH ₄) / H ₂ S / CO / Temp.	Type G	1 gas, HC (or CH ₄) / Temp.
Type B	3 gas, O ₂ / HC (or CH ₄) / H ₂ S / Temp.	Type H	1 gas, O ₂ / Temp.
Type C	3 gas, O ₂ / HC (or CH ₄) / CO / Temp.	Type I	2 gas, O ₂ / H ₂ S / Temp.
Type D	2 gas, O ₂ / HC (or CH ₄) / Temp.	Type J	2 gas, O ₂ / CO / Temp.
Type E	1 gas, CO / Temp.	Type K	2 gas, HC (or CH ₄) / H ₂ S / Temp.
Type F	1 gas, H ₂ S / Temp.	Type L	2 gas, HC (or CH ₄) / CO / Temp.

Specifications

Model	GX-3000			
Gas detected	Oxygen (O ₂)	Combustible gases (Methane or Iso-butane)	Hydrogen Sulfide (H ₂ S)	Carbon Monoxide (CO)
Detection principle	Galvanic cell	Catalytic combustion	Electro-chemical	Electro-chemical
Detection range	0-40.0%vol	0-100%LEL	0-100.0ppm	0-500ppm
Preset alarm (Standard)	1 st Low alarm 19.5%vol 2 nd Low alarm 16%vol	1 st 10%LEL 2 nd 50%LEL	1 st 10.0ppm 2 nd 30.0ppm	1 st 25ppm 2 nd 50ppm
Sampling method	Diffusion sampling			
Response time	Within 30 seconds (T90)			
Alarm method	Gas alarm : 2 step alarm, STEL, TWA and OVER (in continuous monitoring mode only) Trouble alarm : Sensor disconnection, Low battery, Circuit trouble, Calibration error			
Types of alarms	Gas alarm : Flashing lights, intermittent buzzer, Blinking gas density value Trouble alarm : Flashing lights, intermittent buzzer, trouble displayed			
Operating Temp. & Humidity	-20°C to +40°C, 30 to 95%RH, non-condensing			
Power source	Ni-Cad battery pack, direct charge by exclusive charger			
Continuous operation	Continuous monitoring mode : Approx 12 hours (Standard) (25°C, Full charged, Without any alarm)			
Safety design	Intrinsically safe/Flame proof design Exiad II BT3			
Special function	Manual back light LCD (Automatic during alarm) Datalogging (up to 180 days) IrDA port communication			
Standard accessories	Rubber boot, Ring, "S" hook			
Optional accessories	①Mount, ②Hanging rope (5m), ③Datalogging software, ④Filter			
Dimension & Weight	Approx. 56(W) × 152(H) × 56(D)mm, Approx 500g Approx 2.2"(W) × 6.0"(H) × 2.2"(D). Approx 1.1lb.			

• Specifications subject to change without notice.

● Optional Accessories



Charger



①Mount



②Hanging rope



③Datalogging software



④Filter



A9812



ISO 9001:2000

★ Distributed by: